



**Capital**  
Mailing Equipment Inc.

High Speed, High Resolution

**PC108**



- TIJ 4.0 Print Technology
- 4.25" to 8.5" Print Height
- 1200 dpi Print Quality
- Advanced Micro-Recirculation
- Auto Switching Dual Bulks
- Reduced Operator Intervention

# TIJ4.0 for Higher Speed, Taller Print Applications

The PC108 supports the needs of wider width, high-volume printing applications that demand higher speed and higher resolution. Based on TIJ 4.0 technology, and featuring a maximum print width of 8.5 inches (216mm), it boasts a native resolution of 1200 dpi and impressive throughput speeds of up to 600 feet/min when configured at 600/600 dpi. The print heads utilize HP's micro-recirculation technology, which minimizes the need for servicing and reduces decap issues.

The PC108 is designed for easy integration into almost any production line, suitable for Mail, Graphics and Packaging applications. It delivers high-quality prints, including alphanumeric characters, date codes, lot codes, graphics, barcodes, and much more.

## Advanced Print Technology

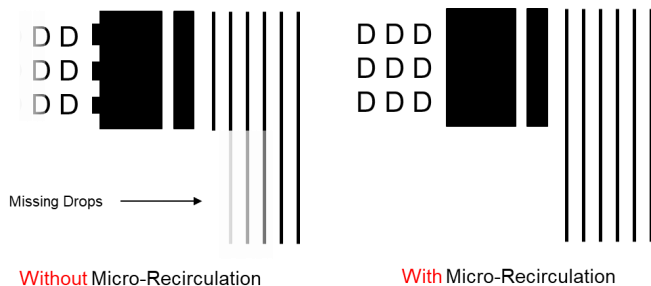
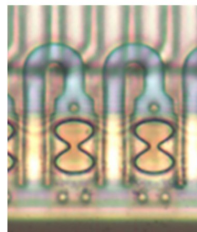
PC108, powered by the latest HP TIJ 4.0 technology, a revolutionary advancement generations ahead of competing coding technologies. Engineered for Bulk ink operations, the PC108 ensures maximum reliability, unmatched uptime, and significantly reduced ink costs.

Experience superior print quality with higher resolution, high speed, and increased throw distance. With every print cartridge change, you receive a brand-new print head, guaranteeing continuous peak performance. Maximize your uptime and efficiency.



## Micro-Recirculation

Micro-recirculation methodology used in the PC108 print heads addresses the issue of ink drying out when the heads are not in use for either short or long periods. This approach minimizes print head maintenance and decap issues, making it an ideal solution for production processes that involve frequent starts and stops.



## Stunning Print Quality

Designed to provide outstanding print quality for a wide range of printing needs, it is capable of producing high-definition, laser-sharp prints for alphanumeric characters, date codes, lot codes, graphics, barcodes, and more.



With a maximum print resolution of 1200 dpi, the PC108 ensures that the printed content is clear, precise, and meets all labeling requirements, past, present and, very importantly, future.

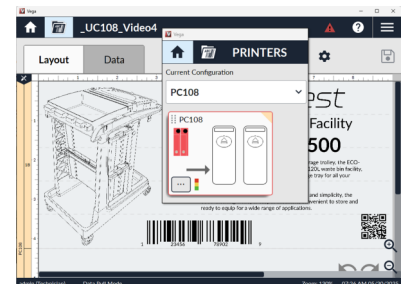
- Tall, seamless images
- Meets Future needs for high density, 2D Barcodes
- Variable Print Resolution up to 1200dpi
- Prints Vertically and Horizontally

## Lowered Cost of Ownership

Using the dual 775ml Bulk Ink Cartridge for PC108 significantly reduces ink costs, operator intervention, and unplanned downtime, directly impacting operating costs. Additionally, Bulk Cartridges can be changed in seconds, further minimizing downtime.

## Intuitive Software

Controlling the PC108 is done utilizing the Norwix enterprise-level Vega software. Its extremely powerful, intuitive, and simple-to-use interface makes it an obvious choice in any environment. It can quickly integrate into external systems, retrieving template data from remote databases and other packaging equipment.



# High Technology, High Performance

## 3.0m Umbilical

Carries ink and electrical signals.

## Dual 775ml Bulk Ink Supply

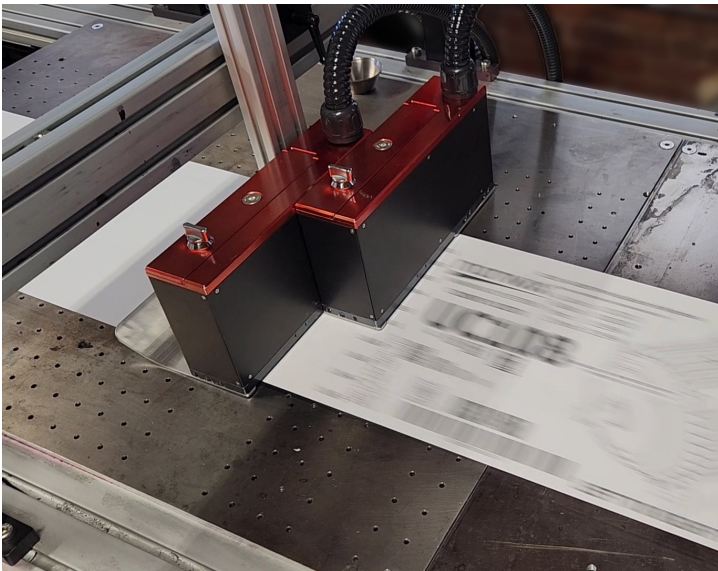
A large bulk capacity ensures minimal operational costs with little operator intervention. Changeover of the Bulk Cartridge takes only seconds.

## PC108 Enclosure

Controller, with Daisy Chain, I/O port connectivity and capacity for two HP108 printheads.

Multiple Enclosures can be daisy chained together for wider print capability

## 108mm TIJ4.0 Printheads





# PC108—Performance

Horizontal Resolution (DPI)	Max Speed	
	ft/min	m/min
600	600	183
1200	300	91

Characteristic	PC108
Print Width	108mm—216mm
Maximum Resolution	600 dpi
Drop Size	7 pl
Jetting Frequency	72 kHz
Throw Distance	Up to 7mm *
Nominal QD life	15L (Application Dependent)

\* Print Speed Dependent

Printable Items	Lot Codes, Datecodes, Alphanumeric, Barcodes, Bitmaps, PDF
Barcode Printing	EAN-13/EAN 8, UPC-A, Code128, ITF-14, ITF-2of5, Code39, Cryptocode, GS1 Datamatrix, QR (114 barcode support included)
Print Density	User Configurable (12.5% - 100%)
Umbilical Length	3m
Ink Types	Aqueous (Black and Spot Colors)
Bulk Solution	Dual 775ml Bulk Supply
Electrical Interface	Ethernet, I/O, Sensor, Encoder, Stack Light
Voltage	115V to 240V
Languages	English, Spanish, German, French, Korean, Chinese, Portuguese
Data File Support	CSV, TXT, MDB, XLS, XLSX, ACCDB
Daisy Chain	Daisy Chain multiple to build larger systems
Communications	1GB Ethernet

