



240D 350D

INLINE
DRYING
SYSTEMS



350D shown with:
• 9720W NIR Dryer



240D shown with:
• 4000W IR Dryer

NOTE: The 350D & 240D are also available in transport only versions 350DT & 240DT.

The series 240D is a complete compact drying system. Quality components featuring durable full frame construction. The upstream product detection provides energy savings and extends transport component life.

The series 350D is a versatile drying platform allowing the customer to choose from a large array of drying units best suited for their application. Quality components featuring durable full frame construction. The upstream product detection provides energy savings and extends transport component life. Now running aqueous and other coated stocks no longer means having to slow production to a crawl.

Features:

- Full Frame Construction
- Triple Safety Interlocks With Operator E-Stop
- Integrated Temperature Control
- 12" Wide Steel Transport Rollers
- Center Table Vacuum
- Variable Speed Transport
- Adjustable Heat Belts

DRYER BASES	350 D	240D
IR (Infrared)		
4000W	X	X
6400W	X	
8000W	X	
NIR (Near Infrared)		
2400W	X	X
6480W	X	X
9720W	X	



Specifications:

240D

Transport Direction: Left to Right or Right to Left
Material Size: Min. 2"L x 3"W - Max 20" wide
Material Thickness: Up To 1/2" Standard
Physical: 24"L x 23.5"W x 33-36" H
Electrical: 110 VAC Single Phase 10 Amp Circuit

350D

Transport Direction: Left to Right or Right to Left
Material Size: Min. 2"L x 3"W - Max 20" wide
Material Thickness: Up To 1/2" Standard
Physical: 35"L x 23.5"W x 33-36" H
Electrical: 110 VAC Single Phase 10 Amp Circuit

IR Dryers

- Faster Line Speeds
- Prolonged Lamp Life
- Utilizes High Efficiency Infrared Lamps

8000 Watt IR

Drying Area: 5" x 16"
 Voltage: 240V, 1-Phase
 Current: 34 Amps

6400 Watt IR

Drying Area: 4" x 16"
 Voltage: 240V, 1-Phase
 Current: 27 Amps

4000 Watt IR

Drying Area: 4" x 10"
 Voltage: 240V, 1-Phase
 Current: 17 Amps

NIR (Near Infrared) Dryers

NIR is cost effective high output drying systems designed for inkjet systems. This new breed of dryers offer greater productivity with reduced operating costs compared to traditional drying systems.

- Faster Line Speeds
- Higher Energy Wave Lengths
- Lower Electrical Consumption Over IR
- Lower Belt & Machine Temps.

9720 Watt NIR

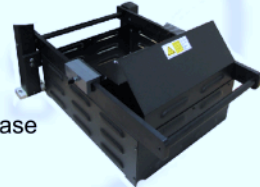
Drying Area: 4.25" x 16"
 Voltage: 240V, 1-Phase
 Current: 40.5 Amps

6480 Watt NIR

Drying Area: 4.25" x 10"
 Voltage: 240V, 1-Phase
 Current: 27 Amps

2400 Watt NIR

Drying Area: 3" x 6"
 Voltage: 240V, 1-Phase
 Current: 10 Amps



Options:

Speed Following

Allows Walco System feeders & transports to maintain matching belt speeds, using one speed control.

Upstream Product Interlock Sensor

The interlock allows the dryer to turn on only while product is flowing. This helps increase belt life, bulb life and reduce energy consumption.

Upstream Stop Interlock

This option allows the dryer base to stop other equipment ahead of it.

All Specifications Subject To Change Without Notice



Walco Systems LLC

33588 Pin Oak Parkway
 Avon Lake, Ohio 44012

440.930.4850 440.930.4851 (fax)
 www.walcosystems.com
 email: info@walcosystems.com

Authorized Walco Systems LLC Distributor

