

## TECHNICAL SPECIFICATIONS

### How Wide?

2.1"  
4.25"  
8.69"  
17"

Combine multiple heads to match the width of transport or web

### What Resolution and Speed?

600x900 dpi up to 166 fpm  
600x600 dpi up to 250 fpm  
600x450 dpi up to 333 fpm  
600x300 dpi up to 500 fpm  
600x200 dpi up to 750 fpm  
Drop Volume: adjustable 7, 11, 14

### How is it mounted?

Custom head mounts available to fit your press or transport

### What Inks?

UV, Water Based, & Spot Colors

### What can I print on?

Coated (UV or AQ) and uncoated paper, foil, Plastic, PVC, Chipboard

### UV Curing

LED or UV Curing Lamps available with system purchase

### Power Requirements

Hawk M6 110 to 220 VAC 50-60 Hz

### Compressed Air

Not Required

### Best Warranty

1 Year Parts / Labor  
Free Lifetime Tech Support

### Included Software & Controller

Windows Based PC  
QPress Layout Software  
Print Control Software  
Optional PDF Software

### Ink Delivery

5 liter to 20 liter supply  
(Ink Dependent)

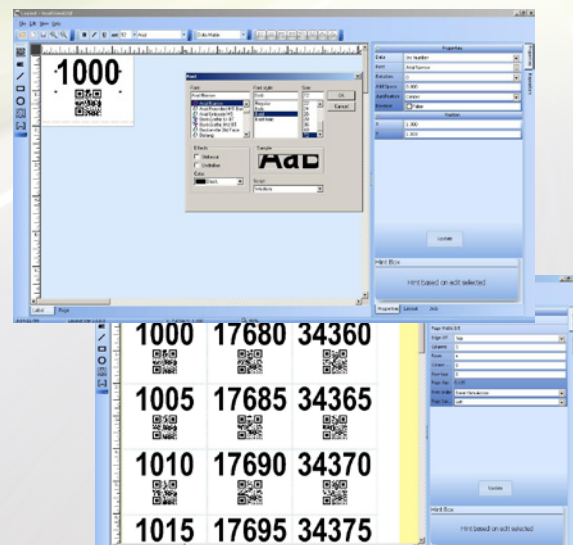
### What Barcodes?

USPS IMB  
USPS Postnet  
USPS IMPB  
UPC A  
Code 128  
Code 39 / 3 of 9  
Interleaved 2 of 5  
Data Matrix  
Data Matrix GS1  
Data Matrix / Harvest Mark  
QR Code  
Aztec  
PDF 417  
Codabar/NW-7  
Code 93  
RSS  
EAN 13  
EAN 8  
SSCC 18  
Custom Barcodes & Many More

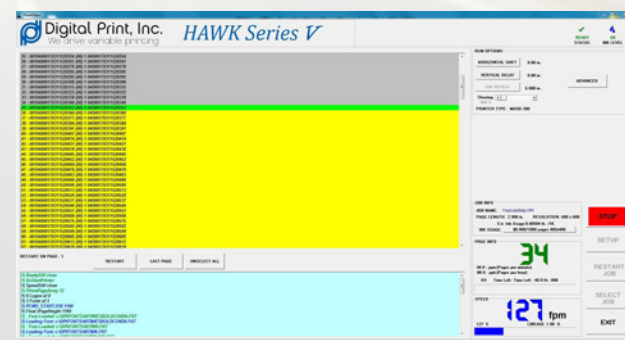


We drive variable printing

217 Performance Lane  
Cresson TX 76035  
817-512-3151 ph  
info@digitalprint.com  
www.digitalprint.com



Industry Leading QPress layout software



Inkjet Control Software



We drive variable printing

# M6 HAWK

## Superior Variable Inkjet





## The Best Variable System for 100s of Presses Worldwide

Finally, a UV inkjet system that fits perfectly on your press, vacuum conveyor, or rewinder and can now be made PORTABLE! Hawk M6 is the latest generation of high resolution DOD print technology from Digital Print, Inc. (DPI). The system is expandable from 2.1" to over 17" with multiple print heads.

The Hawk M6 uses Kyocera's or Ricoh's advanced print head technologies. These robust and reliable print heads are designed for a broad range of industrial and commercial printing applications. They easily support such applications as labels, forms, direct mail, tickets, gaming, promotions, tags, and pharma packaging.

At DPI we create a strategic bond between you and your customer through our latest innovations with variable data technology and our universal controller that will create a revenue stream for years to come!

### APPLICATIONS

- TICKETS, TAGS & LABELING
- DIRECT MAIL ADDRESSING
- READ & PRINT / CARD ATTACHING
- VERSIONING
- FOIL APPLICATIONS
- PLASTIC CARD PRINTING
- PACKAGING
- SECURITY PRINTING
- PHARMACEUTICAL

### Wide Inkjet Heads M6 ADVANTAGE

The system utilizes the latest 30 kHz print module with lightning fast data transfer and print speeds.

- One ink for coated (UV/AQ), non coated or plastic stocks
- Automated maintenance / service features
- Sharp crisp text and barcodes with 1200 dpi quality
- High capacity 5 liter & 20 liter ink supply
- Spot colors can be changed easily
- QPress™ software for minimizing your layout time
- Duplex print with our custom press mount
- Move system to a second press as needs change
- Modular / operator replaceable components



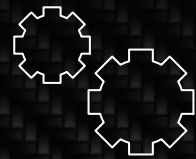
### PRINT HEAD FEATURES

- 600 dpi across the head, (1200 to 200 dpi in direction of travel)
- Cover more than 17" of variable print with multiple head combinations
- Adjustable drop size and shaving for highest barcode readability
- UV curable or water based ink available
- Internal filters eliminate contaminants from the ink
- Internal heaters minimize the impact of external temperature changes
- Head cap and automated service mode reduce maintenance and increase print quality



### VERSATILE / LOW COST UV INK

Inkjet print on a wide range of paper and coated gloss stocks at high production speeds. Virtually double your productivity on 11 x 6 self mailers or postcards by rotating the address and running long edge leading. Ink cost is nearly 90% less than using cartridge based systems. Contact DPI for a complete cost justification based on your



### CUSTOM SOLUTIONS

Let our 30+ years of industry proven experience give you the competitive edge by providing a turnkey system designed specifically for your press. All systems include installation, custom press mounts, onsite training, and application support. Custom software programming is also available for unique applications.



### INKJET CONTROL SYSTEM

- Standard Windows Based PC
- Interface to read and print system
- Initialize QPress, DPI legacy, or pdf jobs\*
- System setup and service
- Monitor job progress
- Remote monitoring with smart phone
- Estimate ink usage



### QPress LAYOUT SOFTWARE

Your more difficult job layouts are a snap with our user friendly software.

- Optimize layout for cut sheet or web
- Step and repeat tools built in
- Easily apply variable data, barcodes or graphics
- Numbering, barcoding, serialization
- Text, graphic, and barcode rotation
- Barcode shaving for improved quality (material with high dot gain)