

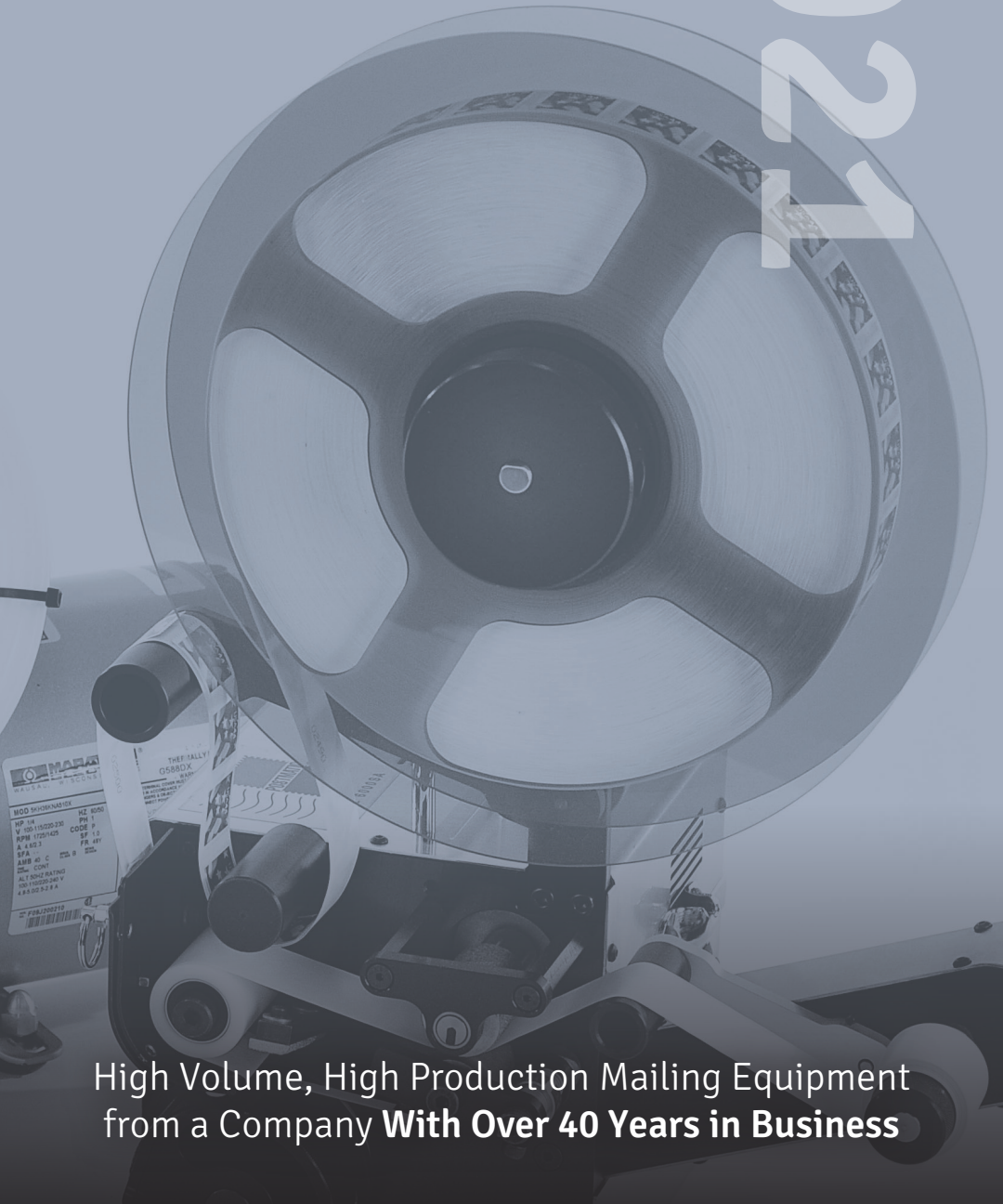


# POSTMATIC

PRODUCT CATALOG

UPDATED

# 2021



High Volume, High Production Mailing Equipment  
from a Company **With Over 40 Years in Business**



### **Mission Statement**

Our mission here at Postmatic is to provide our customers with the most efficient and cost-effective solutions to their mailing, packaging and paper handling needs and provide the very best support our industry has to offer.

We further resolve to accomplish this mission with a code of ethics and honesty that reflects positively on our resellers, vendors, our industry and our customers. We seek to grow our company based on the value and trust of the relationships we develop and pledge to always keep our customer's best interest as our number one priority.

### **About Postmatic**

Founded in 1972, the stamp affixing attachment was a small part of a large packaging equipment manufacture. With little more than purpose, determination, and a handful of dedicated professionals, Postmatic was incorporated in 1978. Recognized as the leader in postage stamp affixing attachments for use with mailing machines, Postmatic has grown to be a name known by professionals throughout the mailing industry.

Postmatic is housed in a 5,000 sq. ft., state-of-the-art manufacturing facility. Engineering and manufacturing technicians strive to meet industry demands. Years of experience in engineering, machine shop and manufacturing work hand-in-hand to bring the best possible products to market.

**Contact us today to find out which Postmatic equipment can solve your mailing, packaging and paper handling needs.**

Postmatic  
9405 Holly Street, Ste D  
Minneapolis, MN 55433  
MADE IN USA

Tel (888) 784-6046  
info@postmatic.net | www.postmatic.net



# Stamp Affixers, Vacuum Bases, Divert Bases & our famous Seal Tight Concentrate

## TABLE OF CONTENTS

- **Inline Stamping Equipment**
  - Stamp Systems ..... 4
  - Stamp Affixers ..... 6
  - Stamp Bases ..... 7
- **PrintOne Equipment**
  - PrintOne Bases ..... 8
- **Inline Vacuum Equipment**
  - Vacuum Bases..... 9
- **Inline Divert Equipment**
  - Divert Bases..... 10
- **Other Equipment and Services**
  - EFS Pro Envelope Flap Sealer ..... 11
  - OEM Friction Feeder..... 11
  - Refurbishment Program ..... 12
- **Seal-Tight Concentrate..... 13**
- **Equipment Accessories ..... 14**

# Stamp Systems

Complete Stamping Systems designed for turn-key operations. Either can be used as standalone or inline with other industry equipment. Our systems provide a complete E2E solution for any low, medium or high volume operations.



## Standard Stamping System – 16” Base

Complete standard stamping system available in M6 and M7 Stamp Affixers

*Includes:*

- (1) #110000 (M6) or #211000 (M7) Stamp Affixer w/ 1/3 HP gast oil less vacuum pump
- (1) #355000 (M6) or #311000 (M7) Stamp Base – 16”
- (1) #457000 Adjustable Table Assembly – 16”
- Configured for 6x9 application

**Stamp Affixers:**

➤ **M6 #110000**

*Fits inline with Postmatic and Pitney Bowes mailing equipment*

➤ **M7 #211000**

*Fits inline with Postmatic and Hasler mailing equipment*



## Extended Stamping System- 36” Base

Perfect for adding inline ink jet, camera or other technologies  
Only available for M6 (#11000) Stamp Affixers

*Includes:*

- (1) #110000 (M6) Stamp Affixer w/ 1/3 HP gast oil less vacuum pump
- (1) #366000 (M6) Stamp Base – 36”
- (1) #456000 Adjustable Table Assembly – 36”
- (1) #488500 Monitor/Keyboard Stand Kit
- Horizontal rail is not included
- Configured for 6x9 application



## PrintOne System - 36" Base

System designed for all-in-one Stamping and Printing  
Only available for M6 (#11000) Stamp Affixers

Includes:

- (1) #110000 (M6) Stamp Affixer  
w/ 1/3 HP gas oil less vacuum pump
- (1) #478000 (M6) PrintOne Stamp Base - 36"
- (1) #456000 Adjustable Table Assembly - 36"
- Configured for 6x9 application



## Dual Stamping System - 36" Base

System designed for Multi-Stamp applications  
Only available for (2) #11000 (M6) Stamp Affixers

Includes:

- (2) #11000 (M6) Stamp Affixer  
w/ 1/3 HP gas oil less vacuum pump
- (1) #479000 (M6) Dual Stamp Base - 36"
- (1) #456000 Adjustable Table Assembly - 36"
- Configured for 6x9 application



## E22 Feeder System - 16" Base

Complete E2E Feeder and Stamping System for  
standalone operations

Includes:

- (1) #459000 OEM Feeder w/ #455000 Feeder Stand  
and #454000 Catch Tray
- (1) #110000 (M6) or #211000 (M7) Stamp Affixer  
w/ 1/3 HP gas oil less vacuum pump
- (1) #355000 (M6) or #311000 (M7) Stamp Base  
16"
- (1) #454000 Adjustable Table Assembly - 48"
- (1) #458000 Swivel Caster Kit w/ lock for all 4 legs
- Configured for 6x9 application



## E2E Sealer/Feeder System - 16" Base

Complete E2E Sealer, Feeder and Stamping System for  
standalone operations

Includes:

- (1) #904942 EFSPRO Envelope Feeder/Sealer  
w/ #454000 Catch Tray
- (1) #311-1400 EFSPRO Extension Kit  
w/ Feeder Stand and Inline Lip
- (1) #110000 (M6) or #211000 (M7) Stamp Affixer  
w/ 1/3 HP gas oil less vacuum pump
- (1) #355000 (M6) or #311000 (M7) Stamp Base -  
16"
- Configured for 6x9 application

# Stamp Affixers

Postmatic Stamp Affixers were first manufactured in 1972 and has been the postage stamp affixer of choice by mailers across the country. Many mailers use their original units on a regular basis running them in a high production environment with little maintenance required. Many of these same units are now being used on our New Inline Stamping Bases in the same high volume, high production environment.



➤ **M6**

#110000

*Fits inline with Postmatic and Pitney Bowes mailing equipment*

➤ **M7**

#211000

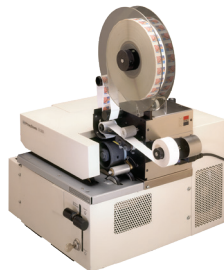
*Fits inline with Postmatic and Hasler mailing equipment*

Postmatic Stamp Affixers exclusive vacuum wheel applicator system eliminates the need to rewind the stamp coils when applying stamps inline with inserters. Large 3,000 or 10,000 coil capacity and applying speeds in excess of 18,000 per hour meets the demands of most high speed inserting equipment.

The ease of operation is quick and easy compared to most other label applicators. Fast and easy loading and unloading allows the operator to produce more throughput and spend less time tending to secondary operations.



Inline Stamping Base w/ M6 Stamp Affixer



Pitney Bowes R-150 w/ M6 Stamp Affixer



Hasler 320AS w/ M7 Stamp Affixer

# Stamp Bases

Inline Stamping Bases that are designed and manufactured for 24/7 operation running inline with inserters, inkjets, tabbers or with a feeder for off-line high speed stamp affixing. Several different models are available to accommodate almost any configuration of stamp affixing—just stamping, stamping and printing, or a dual-head stamp affixing base for two stamp applications.



## Standard Stamping Base – 16”

#355000 for M6 or #311000 for M7  
Stamp Affixer sold separately

### Product Description:

- Designed to accommodate Postmatic Stamp Affixers M6 and M7 Models
- Similar footprint as Pitney Bowes R-150 and Hasler Inline mailing equipment
- Speeds of 240 or 330 ft per minute



## Extended Stamping Base – 36”

#366000 for M6  
Stamp Affixer sold separately

### Product Description:

- Designed to accommodate Postmatic Stamp Affixers - M6 Only
- Extended base for adding inkjet system, labeler or other peripheral equipment
- Perfect solution for inline read and print systems used on inserting equipment allowing you to stamp and print with one system in one pass.
- Monitor/Keyboard Stand Kit and Horizontal Rail sold separately



## PrintOne Stamping Base – 36”

#478000 for M6  
Stamp Affixer sold separately

### Product Description:

- Designed to accommodate Postmatic Stamp Affixers - M6 Only
- Complete package for affixing stamps and printing “Mailers’ Precancelled Permit”, just affixing stamps or just static printing all in a single pass
- Using standard HP 45 inkjet cartridges

# PrintOne

A very cost effective solution for printing text messages, return addresses, "Mailables' Precancelled Permits", dates, bulk rate permits, indicia, logos, barcodes and more. Simply download your image or text from your PC or laptop to the print head and you're ready to print over and over again. No expensive print driver or PC integration required. Several different configurations are available of the Print One to accommodate your application.



## PrintOne Standard Base – 16”

#477000 for 6x9 or #922000 for 10x13

*Product Description:*

- Uses standard HP 45 inkjet cartridges and thermal inkjet technology
- 1" print head enables printing inline with high speed inserters, inkjet systems, tabbers and other mail preparation equipment
- Fully self contained



## PrintOne Stamping Base – 36”

#478000 for 6x9

Stamp Affixer sold separately

*Product Description:*

- Designed to accommodate Postmatic Stamp Affixers - M6 Only
- Uses standard HP 45 inkjet cartridges and thermal inkjet technology
- 1" print head enables printing inline with high speed inserters, inkjet systems, tabbers and other mail preparation equipment
- Fully self contained



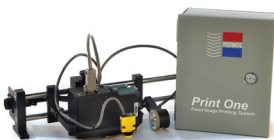
## PrintOne Extended Base – 36”

#934000 for 10x13

2nd Print Head sold separately

*Product Description:*

- Uses standard HP 45 inkjet cartridges and thermal inkjet technology
- 1" print head enables printing inline with high speed inserters, inkjet systems, tabbers and other mail preparation equipment
- Fully self contained



## PrintOne Kit

#476000

*Product Description:*

- Fully self contained, portable static print system
- 1" static printing
- Kit includes a 1" HP Print Head, Trigger Sensor and Encoder mounted to a 24" wide Bridge Assembly and its own electrical enclosure housing the required power supply



# Vacuum Bases

Postmatic Inline Vacuum Bases are compact, high volume vacuum transport bases specifically designed to be used with almost any Ink-Jet System, Camera Systems, Labeling Systems or other peripheral equipment. Fully self contained with a high volume blower to provide constant control of the piece as it passes through. Variable speed DC Drive provides speeds up to 400 feet per minute.



## Standard Vacuum Base – 16”

#388000 for 6x9 or #911000 for 10x13

### Product Description:

- Configurable for L2R or R2L belt travel
- 16” Input to Output
- Sealed ball bearing and precision electronic control for years of trouble-free use
- Used with almost any inserter, inkjet system or other equipment



## Extended Vacuum Base – 36”

#399000 for 6x9 or #933000 for 10x13

### Product Description:

- Configurable for L2R or R2L belt travel
- 36” Input to Output
- Sealed ball bearing and precision electronic control for years of trouble-free use
- Used with almost any inserter, inkjet system or other equipment



## Extended Vacuum Base – 48”

#944000 for 10x13

### Product Description:

- Configurable for L2R or R2L belt travel
- 48” Input to Output
- Sealed ball bearing and precision electronic control for years of trouble-free use
- Used with almost any inserter, inkjet system or other equipment

# Divert Bases

The Inline Divert Base is a very cost-effective solution to Diverting inline with any inserter, ink-jet, camera system or other. Use this unit with upstream decision-making peripherals allowing for more throughput.



## **Standard Divert Base – 16”**

#853000 for L2R or #854000 for R2L

### *Product Description:*

- Configurable for up to 10x13 applications
- 16” with no vacuum
- 18” W x 16” L input to output
- 8” divert with electronic gate activation



## **Extended Divert Base – 24”**

#855000 for L2R

### *Product Description:*

- Configurable for up to 10x13 applications
- 24” with no vacuum
- 18” W x 24” L input to output
- 8” divert with electronic gate activation



## **Extended Divert Vacuum Base – 48”**

#863000 for L2R or #864000 for R2L

### *Product Description:*

- Configurable for up to 10x13 applications
- 48” with 40” vacuum belt transport
- 18” W x 48” L input to output
- 8” divert with electronic gate activation

# EFS Pro Envelope Flap Sealer

Automatic envelope flap sealer featuring the Postmatic Envelope Flap Sealing System. From an A5 envelope up to a 10x13 and with various types of flaps, the EFS Pro will provide consistent feeding and flap sealing quality. Convenient and easy to set-up, along with quick changeover from one job to another.



## EFS Pro Feeder/Sealer

#904942

### Product Description:

- Advanced sealing technology from A5 to 10x13 envelopes with thickness up to ¼ inches
- Speeds up to 10,000 per hour with variable speed control and digital counter
- Includes #904363 Catch Tray for EFSPro

# OEM Friction Feeder

Continuous feeder for feeding flat and multi-thickness products consistently at high speeds into mail production streams, including inkjet and tabber systems. Feed a wide variety of flat and multi-thickness products including manuals, cards, envelopes, flat cartons, magazines, sheet paper, and much more.



## OEM Friction Feeder

#459000

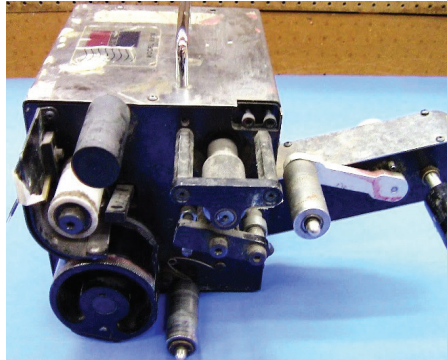
### Product Description:

- Variable speed 6x9 friction feeder
- Specially setup out of the box for inline use with Postmatic Equipment
- Includes #455000 Feeder Stand and #455005 Catch Tray

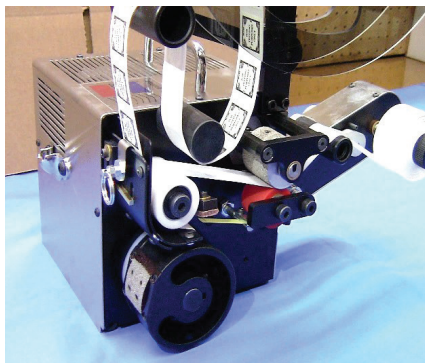
# Refurbishment Program

Take advantage of Postmatic's refurbishment program. Send us your current Postmatic equipment in its present working or non-working state and we will refurbish your equipment to like new mechanical condition. We will inspect and offer a preliminary diagnosis and estimate for your approval. Don't wait until your equipment stops working. Send it in for a thorough preventive maintenance operation today.

Before



After



# Seal-Tight Concentrate

SEAL-TIGHT Concentrate is the most cost-effective solution to solving troubled sealing problems when used with inserting equipment, envelope sealing, stamp affixing or package tape dispensing. SEAL-TIGHT Concentrate is highly concentrated and with a mixing ratio of 32 to 1, four ounces will make a full gallon of high-performance sealing solution. This alone eliminates the expensive costs of shipping premixed solutions.



## Nine 4oz Bottles - Blue

#6006

*Makes 9 gallons of sealing solution*



## Half Gallon - Blue

#6011

*Makes 16 gallons of sealing solution*



## 1 Gallon - Blue

#6016

*Makes 32 gallons of sealing solution*



## 5 Gallons - Blue

#6021

*Makes 160 gallons of sealing solution*



## 15 Gallons - Blue

#6026

*Makes 480 gallons of sealing solution*



**Adj Table Assy 16"**

#457000

*Completely Adjustable 16" Stand w/ Shelf*



**Adj Table Assy 24"**

#456500

*Completely Adjustable 24" Stand w/ Shelf*



**Adj Table Assy 36"**

#456000

*Completely Adjustable 36" Stand w/ Shelf*



**Adj Table Assy 48"**

#454000

*Completely Adjustable 48" Stand w/ Shelf*



**Chassis Feeder  
Mount Stand - 6x9**

#455003

*Chassis Mount Feeder Extension Stand  
for 6x9 application bases*

**Chassis Feeder  
Mount Stand - 10x13**

#455007

*Chassis Mount Feeder Extension Stand  
for 10x13 application bases*



**Feeder Stand**

#455000

*Feeder stand for Postmatic Inline Bases*



**Material Catch Tray**

#455005

*Material Catch Tray. Available in black or white*



**Table Leg Caster Kit**

#458000

*Complete Table Leg Kit w/ all 4 Locking Swivel Casters*



**Monitor/Keyboard Stand Kit**

#488500

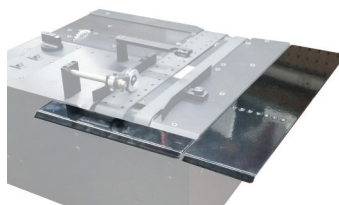
*Complete Upright mount for Monitor and Keyboard. Fits 24", 36" and 48" Bases*



**EFSPro Feeder Stand/  
Extension Kit**

#311-1400

*EFSPro Feeder stand and extension kit for any Postmatic Inline Bases*



**10x13 Deck Extension Kit**

#355150

*Deck Extension Kit for 10x13 envelopes. Fits 16" Stamp Bases*

Postmatic  
9405 Holly Street Ste D  
Minneapolis, MN 55433

We've Shipped Our Equipment  
Across the Globe

