

The Videojet 4210 addressing system with highly reliable ink jet technology and solvent-based inks lets you put variable data on nearly any surface.

- **Windows®-based front end with WYSIWYG layout software — network retrieval of data files and simplified set-up and operation**
- **Built-in intelligent stacker control — optimize bundle sizes based on user definable settings**
- **Independent printheads — place variable print wherever you need across the entire mail piece**
- **Drop in replacement for Videojet System 4000 — provides simple upgrade path to use with existing Excel 270g printers**



The Videojet 4210 ink jet printing system provides reliable and cost effective printing of addresses, personalized messages, bar codes and serialized numbers at high throughput speeds. The PC-based controller can also interface with a variety of external equipment to maximize your investment and keep your production line running at peak efficiency.

Reliable ink jet technology with solvent-based inks

Videojet offers a complete line of ink jet inks and fluids to address a wide variety of applications. In particular, solvent-based inks (including alcohol or MEK) that can run in the 4210 adhere to the toughest coated substrates, including polywrap. Water-based inks are also available.

The 4210 provides typical throughput of 20,000 mail pieces an hour in multi-line mode, with simple start-up and maintenance procedures that keep you up and continuously printing. Extremely popular with newspapers running Total Market Coverage (TMC) applications, the 4210 can print any combination of fixed text, variable text, numbering (up to 4 independent counters), barcodes and multiple date/time formats. This system also supports the use of single-line, twin-line and tri-line modes on appropriate fonts.

Windows®-based front end with WYSIWYG software

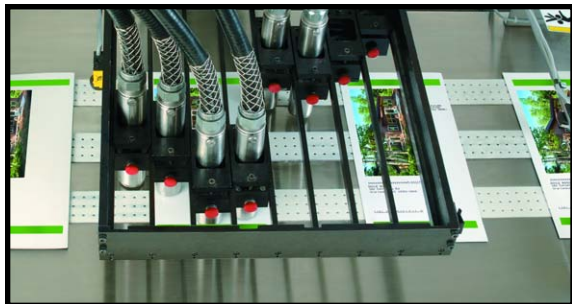
The graphical production screen in the 4210 system provides a color coded representation of envelopes in progress, production rates, remaining records, estimated job completion, and other data. The Windows-based front end with WYSIWYG layout software simplifies set-up and operation, and fine tune software adjustments make left hand justification a breeze.

The 4210 also provides a mechanism for running on demand reorders as well as an option to run all records not marked as done at the end of the production file. CSV, JS2 and database file formats are handled natively by the printer. A conversion utility enables easy importation of nearly any other desired format.

Counter stacker control

The 4210 system can provide intelligent stacker control that looks forward in the database to optimize mail bundles and helps you take advantage of postal discounts. The operator can choose desired stack size, minimum stack size, and a compensate (rotate the stack 180° to keep the stack level) setting. Sort breaks that don't meet minimum stack size requirements can trigger a divert gate to keep those mail pieces out of the stacker. The most common digital I/O controlled stackers are supported.



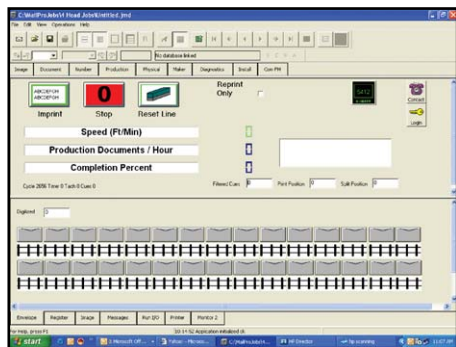


Independent printheads

A single printer utilizes 2 heads which can provide 6 lines of print, and the system can be expanded to include up to 4 printers, for a total of 24 lines of print. The heads can be split to print in non-contiguous areas on the mail piece, for even more flexibility (i.e., address and indicia).

Drop in replacement for System 4000

The Videojet 4210 controller is a drop in replacement for existing Cheshire® S4000 controllers, providing upgraded functionality while allowing current customers to leverage the investment already made in Videojet Excel® 270g printers.



Videojet TotalSource® Service

The **TotalSource** program is the finest and most complete technical support system in the business. These services include everything from expert applications assistance, operator training and a full spectrum of maintenance services. The **TotalSource** program ensures total customer satisfaction.

Support when you need it



CERTIFIED
ISO 9001
DOCUMENTED QUALITY

Specifications

PC Controller

- 2.8GHz Pentium Micron PC with keyboard and optical mouse;
- 15" (38 cm) NEC flat screen monitor

Printhead/Cable

- Compact stainless steel 1 3/8" (35 mm) diameter printhead. Two per each printer. Omni-directional capability. Vinyl covered armored conduit in 20' (6.1 m) length.

Language Versions

- US English, UK English, French, German, Spanish, Dutch

Character Fonts

- 10 standard fonts

Character Set

- Code Page 850 extended ASCII subset

Font Matrix Configuration

- 5x5, 5x7, 7x9, 9x9, 10x16, 16x24 single line; 5x7 and 5x7 with 10x16 twin line; 5x7 with 16x24 tri-line

Bar Code Fonts

- Interleaved 2 of 5; Code 39; POSTNET™

Print Rate

- Up to 60,000 documents per hour, depending on size of media, number of lines and character pitch

Message Length

- Up to 500 characters per line, including spaces; up to 24 lines of information with the full system configuration

Environmental

- Operating temperature: 40° F to 110° F (5° C - 43° C)
- Humidity range: 15% - 90% RH non-condensing

Air Requirements

- 2.0 SCFM at 80 PSI (5.4 bars) per printer; clean, dry, instrument quality air

Electrical Requirements

- Nominal 120 or 240 VAC at 50/60 Hz, 75 watts (printer)

Product Detection

- A product detector and encoder comes with the basic system

Enhancements

- Relay control module (RCM) to control other document handling and sorting equipment. CD-ROM drive. Overhead umbilical stand.

Inks

- Supported by a full range of Videojet inks and supplies, including formulations that meet US Postal Service POSTNET specifications

External Cables

- Printer Serial data cable (RS232) DB-25M (2,3,7 pinout), 1 per printhead
- Printer Tach/Cue (RJ11), 6 wire 2 outputs 1 input opto isolated, 1 per printhead
- Base Control (DB15, Encoder, Photo eye input, Base stop relay)
- Base I/O (DB-37), 5V ACT series inputs/outputs

Internal Cables

- LAN, utp, RJ45
- DC Power (5, 12, 24V) MolexDualRow-6
- RS232 (DB-9)
- LightPole MolexInline-6

Cabinet Dimensions

- 39" x 24" x 31" (99.1 x 61.0 x 78.7 cm)

Approximate Weight

- PC controller cabinet, 66lbs (30 kg); expected total system configuration, approximately 100 lbs (45.4 kg)



800-843-3610 • www.videojet.com • info@videojet.com

Videojet Technologies Inc. • 1500 Mittel Boulevard
Wood Dale IL • 60191-1073 • USA
Phone: 630-860-7300 • Fax: 630-616-3623

© 2008 Videojet Technologies Inc. – All rights reserved. Videojet Technologies Inc.'s policy is one of continued product improvement. We reserve the right to alter design and/or specifications without notice. Windows is a registered trademark of Microsoft Corporation. Videojet, Cheshire and TotalSource are registered trademarks of Videojet Technologies Inc. POSTNET is a trademark of the United States Postal Service®, used with permission.